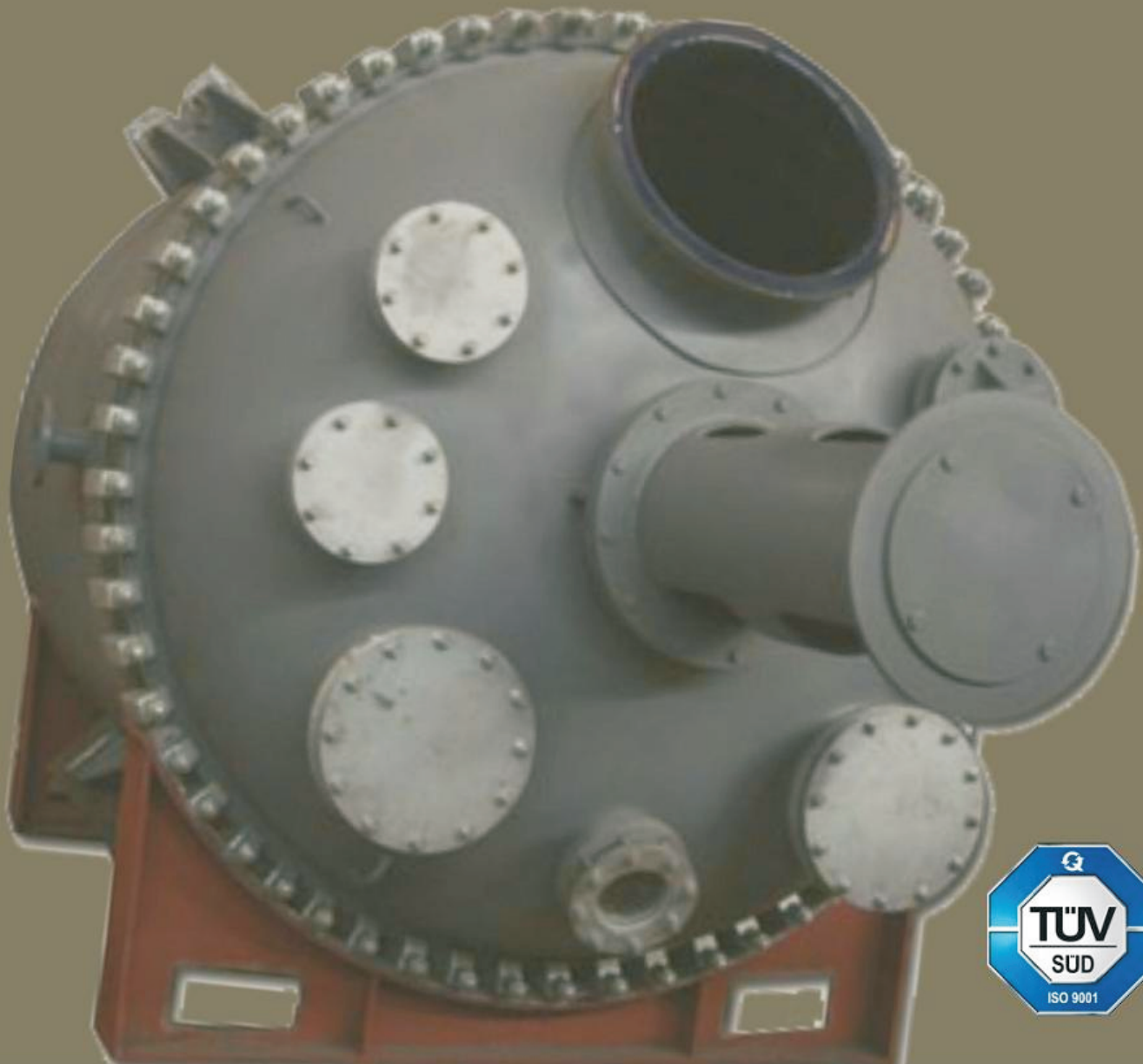


NATIONAL

ENGINEERS & STEEL FABRICATORS





From the Chairman's Desk

We appreciate your interest in giving us an opportunity to introduce our company National Engineers & Steel Fabricators (NESF). NESF is extensively engaged in offering an incredible portfolio of products and services to fulfil almost every need of the industrial sector spanning the nation.

With more and more industrial revolution sweeping the world and increased industrial development in the country due to liberalisation and favourable policies of the government, we constantly keep updating and striving in our efforts for improvement with the latest technology available to achieve customer satisfaction in all aspects. It is Company philosophy to accord the highest priority to the customer and his needs.

NESF has successfully designed, manufactured, supplied, erected and commissioned various high quality and precision jobs for company projects in different fields of application in all kind of industries.

We are already catering to the demanding needs of huge corporate giants such as Reliance Industries, Garden Silk Mills, Bombay Dyeing, Essar Steel, JCT, Welspun to name a few.

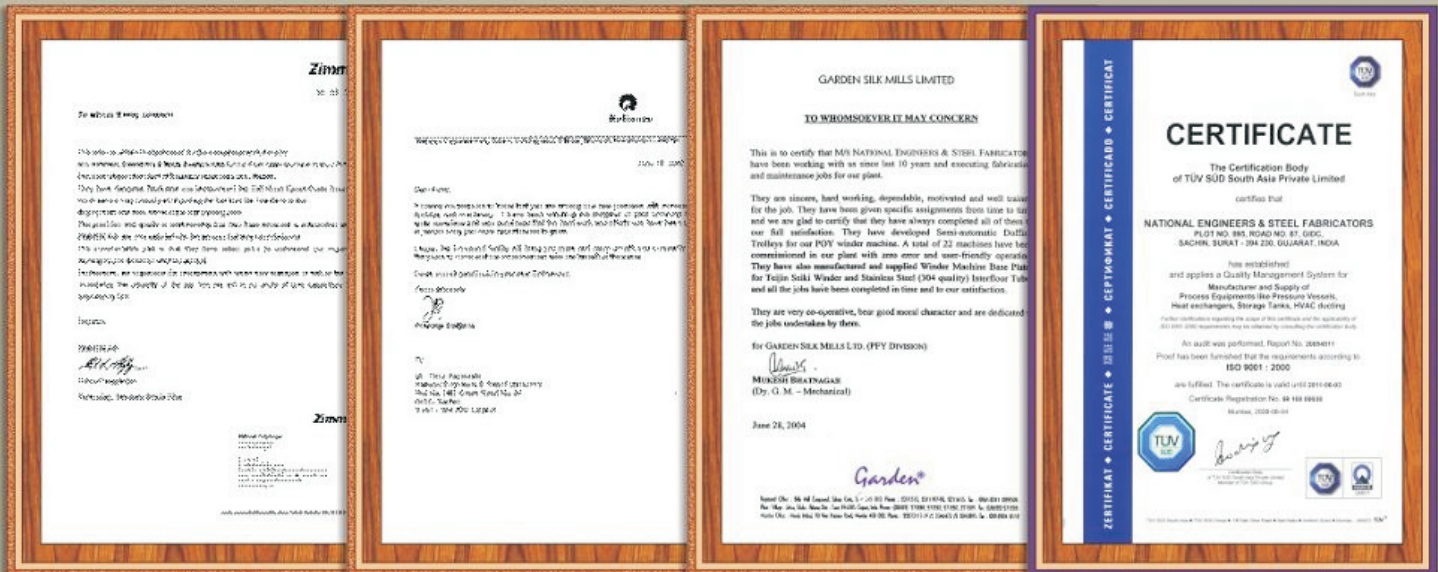
We hope that you will give us an opportunity to have a long lasting and mutually beneficial business relationship with your esteemed company.

Firoz Patrawala

Mustafa Patrawala

QUALITY POLICY

We are committed to achieve customer satisfaction by providing quality products on time, which is achieved by Employee involvement with team work, Effective utilization of resources and continually improving the effectiveness of the "QUALITY MANAGEMENT SYSTEM"





Garden Silk Mills Ltd.

Blow Down Tank
SA 516 Gr. 70; 8 mm thick
Ø 2000 ID x 3900 mm L - 4 MT
4 kg/cm²g pressure



Garden Silk Mills Ltd.

Slurry Mix Tank
SS 304; 5 mm thick
Ø 2800 ID x 6400 mm H - 4.5 MT
1.5 kg/cm²g pressure

Reliance Industries Ltd.

Tow Can (Zimmer)
SS 304; 2 & 3 mm thick
2500 x 2500 x 3700 mm H - 2 MT
Atmospheric pressure





Essar Steel Ltd.

Nitrogen Buffer Tank (50 m³)

SA 516 Gr. 70; 25 mm thick

Ø 2600 ID x 10500 mm H - 16.5 MT

18 kg/cm²g pressure



Essar Steel Ltd.

Air Receiver

SA 516 Gr. 70; 25 mm thick

Ø 1400 ID x 3800 mm H - 4 MT

19 kg/cm²g pressure



Reliance Industries Ltd.

Flakes Hopper

SS 304; 5 mm thick

3500 x 2400 x 5100 mm H - 4.5 MT

Atmospheric pressure





Essar Steel Ltd.

Venturi & Scrubber

IS 2062 + 12 mm Liner (Hard) plates

7000 mm H - 12 MT

4.5 kg/cm²g pressure



Essar Steel Ltd.

Cooling Gas Compressor Suction Pipe

IS 2062; 10 mm thick

1300 ID x 5800 mm H - 4.2 MT

Atmospheric pressure



Essar Steel Ltd.

Air Receiver

SA 516 Gr. 70; 18 mm thick

Ø 2300 ID x 6000 mm H - 7 MT

12.24 kg/cm²g pressure



Essar Steel Ltd.

Surge Tank

SA 516 Gr. 70; 20 mm thick

Ø 2200 ID x 5500 mm H - 5.5 MT

16 kg/cm²g pressure





MANUFACTURING FACILITIES

<u>Machine / Equipment</u>	<u>Capacity</u>
Plate rolling Machine	25 mm thk. (1 no)
Hydraulic Press	300 MT (1 no)
Hydraulic Press Brake	250 MT (1 no)
Air Plasma Cutting Machine	30 mm thk. (1 no)
Radial drilling Machine	2.5 inches (2 nos)
Profile Cutting Machine	150 mm thk. (1 no)
Welding Rectifiers (TIG)	400 amps (14 nos)
CO2 Welding Machines (MIG)	400 amps (2 nos)
Universal Milling Machine	No. 3 (1 no)
Shaper Machine (Cincinnati)	24 inches (1 no)
Centre Lathes	2 m, 3 m (3 nos)
Compressor	5 HP (1 no)
Hydraulic Hacksaw	250 mm (2 nos)
Pug Cutting Set	40 mm (3 nos)
Hydrotest Pump	70 kg/cm ² g (1 no)
Lockformer Machine	16 G thk. (1 no)

MATERIAL HANDLING FACILITIES

Overhead Crane	10 MT, 7 m lift (1 no)
Chain Pulley Block	Upto 5 MT (14 nos)



Specialists in the manufacture of...

- Air Receivers ● Tow Cans
- Surge Tanks ● HVAC Ducts
- Dry Cyclones ● Dryer Exhaust Ducts
- Venturi & Scrubbers ● Interfloor Tubes
- Hoppers ● Doff Buggies
- Storage Tanks ● Base Plates

Continuous Process Equipments in Stainless Steel, Boiler Quality and other exotic metals

And all types of Structural Fabrication

Complying with ...

Various codes of conformance such as ASME Sec. VIII & Sec. IX, IS, DIN etc.

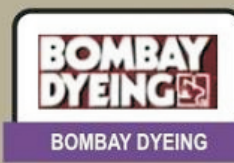
Welder qualification procedures such as WPS, PQR and WPQ.

Non-Destructive Testing like Ultrasonic Testing, Radiography, DP, Hydrotest etc.





Few Purchase Orders



Consistently serving industries such as ...



Chemical Plants



Effluent Treatment



Steel Plants



Fertilisers



Petrochemicals



Ship-building



Man-made Fibre





WORKS:

NATIONAL ENGINEERS & STEEL FABRICATORS

Plot no. 995, Road No. 87, GIDC, Sachin, Surat-394230.
(Gujarat State) INDIA.

PH.: +91 96625 25950, 0261 - 6575852

E-mail: admin@nationalengrs.com national_engg@rediffmail.com

Website: www.nationalengrs.com

MUMBAI WORKS:

SYNERGY ASSOCIATES

Plot no. F-68, Additional Ambernath Indl. Area,
Anand Nagar, Ambernath. Dist. Thane, Mumbai.

E-mail: synergy_associates@rediffmail.com